

JOINT TECHNICAL AND STAKEHOLDER ADVISORY COMMITTEES

Meeting No. 4

September 13, 2023

The environmental review, consultation, and other actions required by applicable federal environmental laws for this project are being, or have been, carried out by DOT&PF pursuant to 23 U.S.C. 327 and a Memorandum of Understanding dated April 13, 2023, and executed by FHWA and DOT&PF.

ZOOM REQUESTS AND FUNCTIONS

TECHNICAL AND STAKEHOLDER ADVISORY COMMITTEE MEETING



Please keep your microphone muted. Phone users press *6 to mute or unmute your line.



Use “Chat” to view the chat window or send a message.



Select “Raise Hand” under “Reactions” to indicate you have a question/comment. Phone users press *9 to raise hand.



Make sure you are identified by name and organizational affiliation. Open the “Participants” window, hover your mouse over your name, select “More,” and then “Rename.”

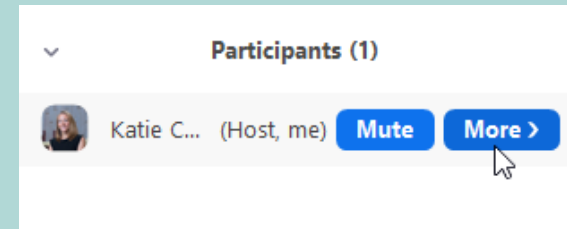


If your connection cuts out, this is the phone number you need to dial back into the meeting: (253) 215-8782, Meeting ID: 820 2282 9244, Passcode: 517629.

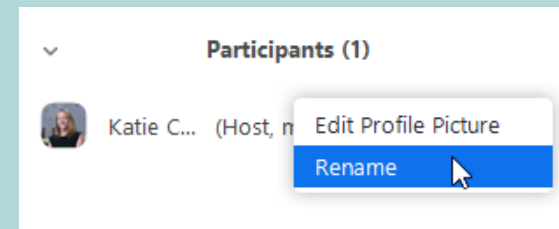


Use the “Show Captions” function to view closed captioning.

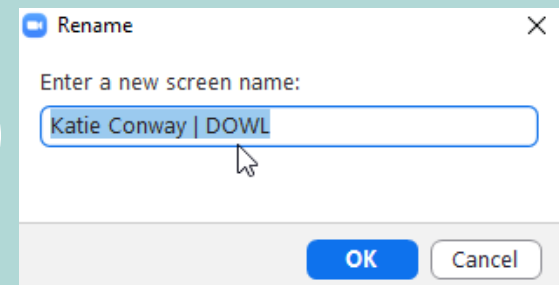
1



2



3

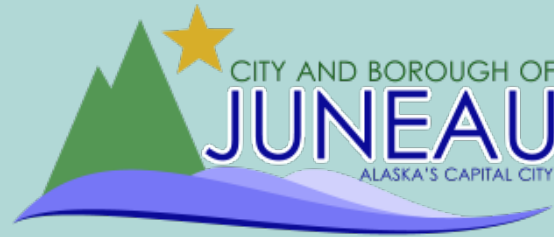


AGENDA

- Welcome and Introductions
- PEL Study Process and Schedule Update
- Additional Fieldwork to Support Level 2 Screening
- Discussion
- Wrap-up & Next Steps



PROJECT TEAM



Greg Lockwood
Project Manager

Marie Heidemann
Project Planner

Christy Gentemann
Environmental Analyst

Katie Koester
Director of Engineering & Public Works

Bridget LaPenter
Project Manager

Irene Gallion
Senior Planner

Steve Noble, PE
Project Manager

Renee Whitesell, PTP
PEL Study Lead

Theresa Dutchuk
Environmental

SCHEDULE

SPRING 2022

SUMMER / FALL 2022

WINTER 2022 / SPRING 2023

SUMMER - WINTER 2023

WINTER / SPRING 2024



Project Initiation,
Problems to be Solved,
Purpose & Need:
Emerging Themes



Evaluation Criteria,
Develop & Screen
Alternatives



Evaluate & Refine
Alternatives



Limited Environmental
Fieldwork & Additional
Analysis



Finalize
Documentation

Baseline Analysis, Data
Collection, Purpose & Need:
Emerging Themes

Identify Crossing Alternatives and
Develop Screening Criteria

Level 1 Screening

Level 2 Screening,
Recommended Alternatives,
Draft PEL Study

Public Comment Period (30 days)
and Finalize PEL Study



PURPOSE & NEED STATEMENT



PURPOSE

The **purpose** of the Juneau Douglas North Crossing PEL Study is to identify ways to improve the connection between Douglas Island and Juneau.

The secondary purposes are to identify ways to improve transportation for non-motorized users and reduce transportation related energy consumption.



NEED

An improved connection to Douglas Island should address the following needs:

- **Alternate access and transportation infrastructure resiliency**
- **Decrease traffic pressure on Douglas Island Bridge and its intersections**

*The identified alternative(s) should also strive to meet these **additional goals**:*

- Improve connection to North and West Douglas Island by creating additional traffic capacity to support the future development of affordable housing and economic development opportunities.
- Enhance and protect public health and safety and safety of travelers and the communities that transportation facilities traverse and serve.
- Transportation improvements should avoid, minimize, and mitigate impacts to the environment and to residential areas.
- Transportation improvements should maintain the visual, cultural, and scenic identity of Juneau and Douglas Island.

PUBLIC INVOLVEMENT UPDATE

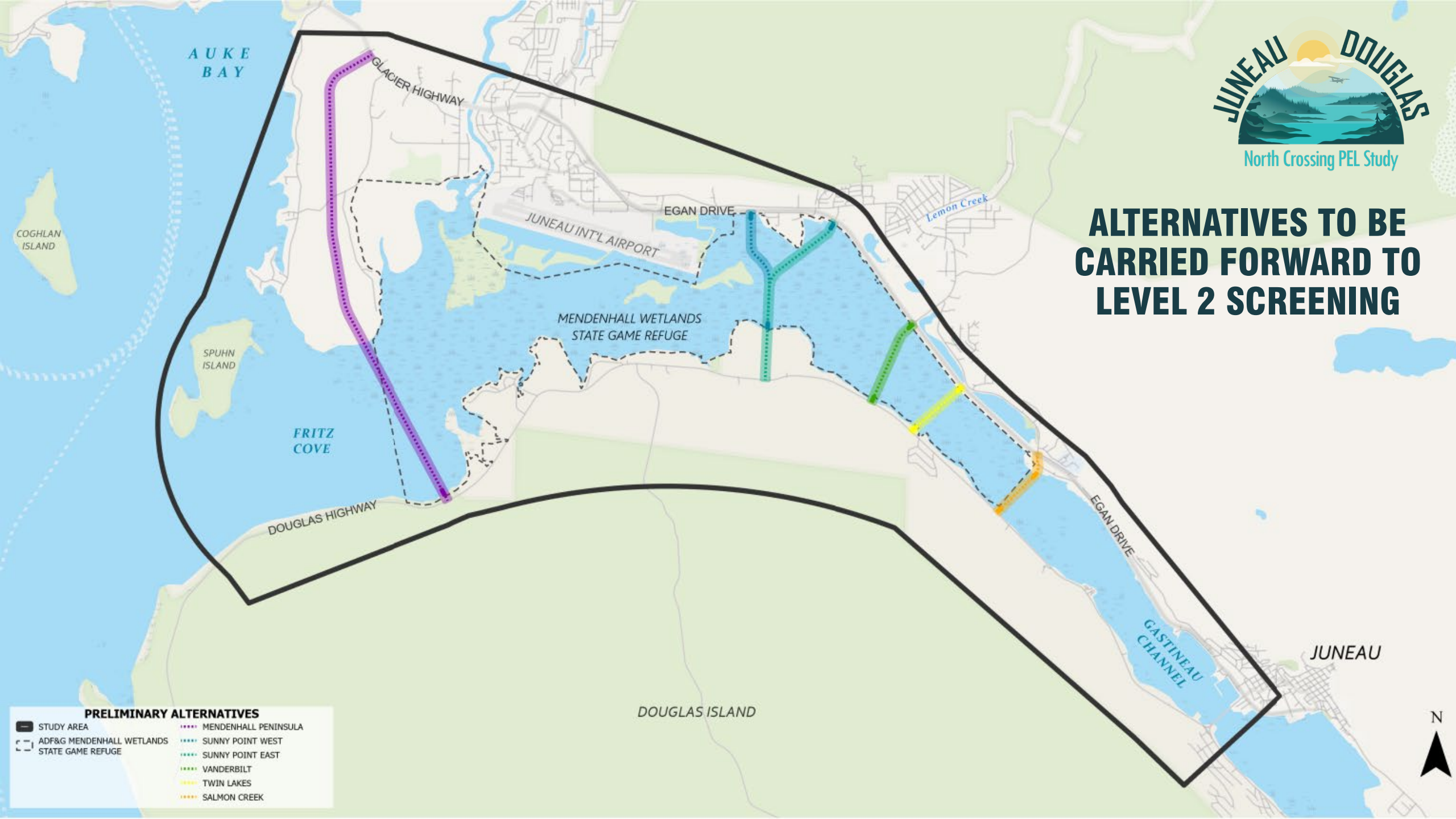
AGENCY AND SMALL GROUP MEETINGS

- Juneau Airport
- Air Carriers
- Sunny Point Neighborhood Association
- Mendenhall Wetlands Study Group
- City and Borough of Juneau Assembly
- State and Local Representatives
- Residents



Image source: North Crossing PEL Study

ALTERNATIVES TO BE CARRIED FORWARD TO LEVEL 2 SCREENING



- PRELIMINARY ALTERNATIVES**
- STUDY AREA
 - ADF&G MENDENHALL WETLANDS STATE GAME REFUGE
 - MENDENHALL PENINSULA
 - SUNNY POINT WEST
 - SUNNY POINT EAST
 - VANDERBILT
 - TWIN LAKES
 - SALMON CREEK



ADDITIONAL FIELD STUDIES & LEVEL 2 SCREENING

ADDITIONAL FIELD STUDIES

Agencies, organizations, and the public have suggested Level 2 Screening would benefit from additional environmental analyses.

Proposed Fieldwork Includes:

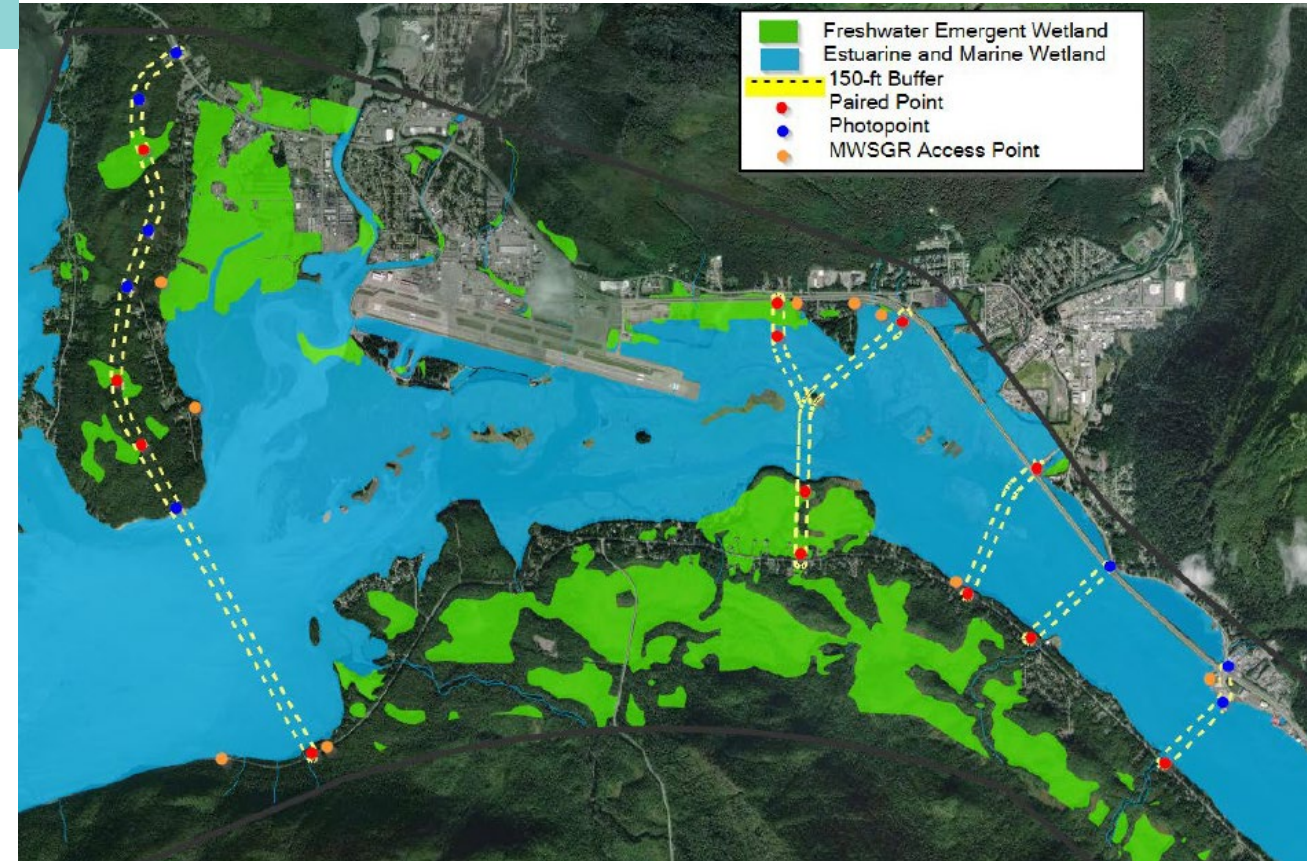
- Wetland delineation
- Eel grass survey
- Intertidal habitat mapping
- Migratory bird survey and upland bird habitat mapping



WETLAND DELINEATION

Work Plan: Identify potential boundary between wetlands and uplands

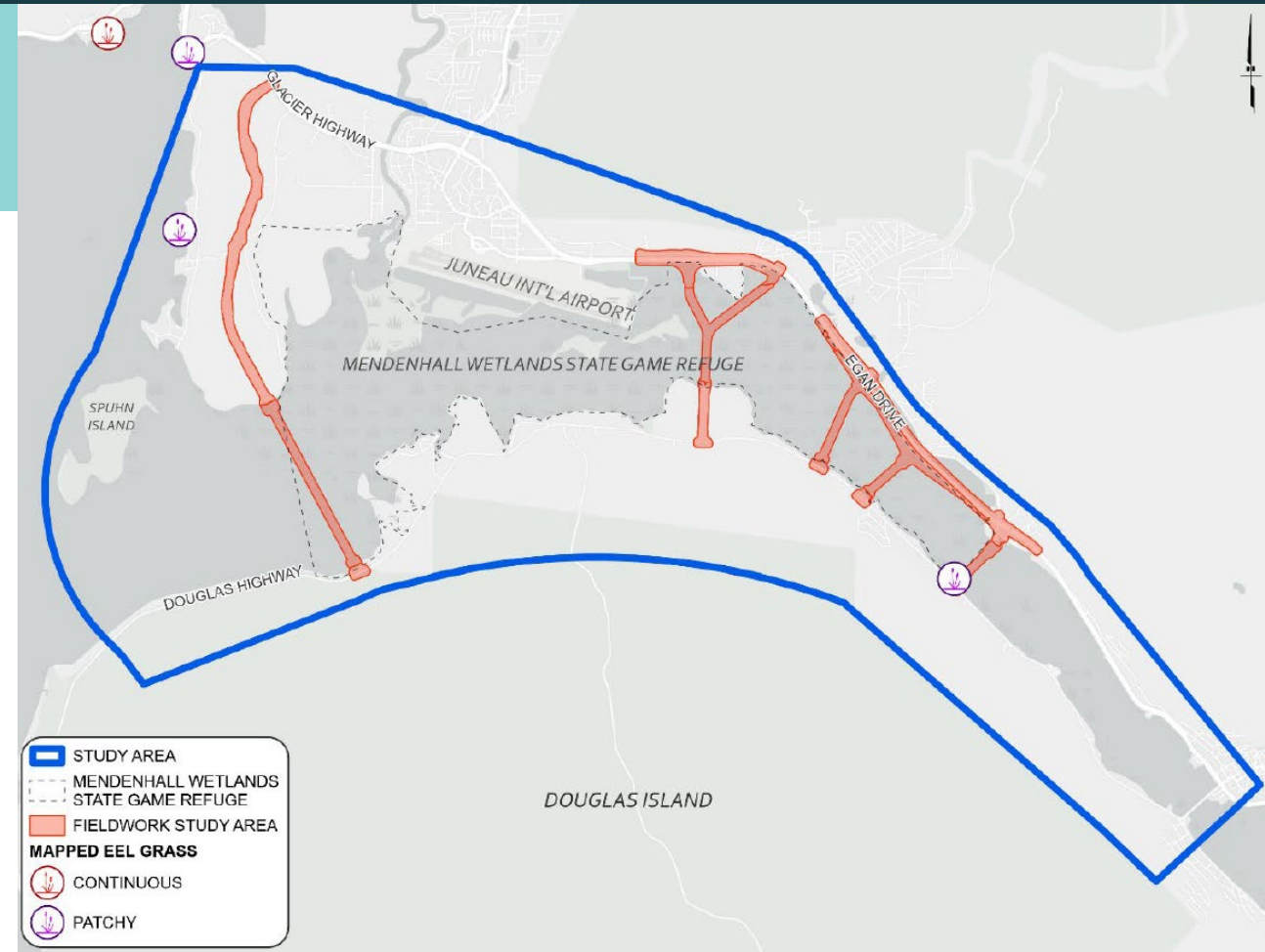
- Assess wetland functions and values
- Collect data using the three-parameter approach
 - Hydrophytic vegetation
 - Hydric soils
 - Wetland hydrology
- Document the change between wetlands and uplands



EELGRASS SURVEY

Work Plan: Map patches and beds of native eelgrass and introduced “dwarf” eelgrass within the footprints of the potential alternatives

- Preliminary survey to determine the presence or absence of eelgrass
- Systematic method to document the absence of eelgrass using photo points
- Document while walking the accessible portions at low tide
- Conducted concurrently with the intertidal habitat mapping



INTERTIDAL HABITAT MAPPING

Work Plan: Evaluate the potential impacts of the proposed alternatives on intertidal habitats

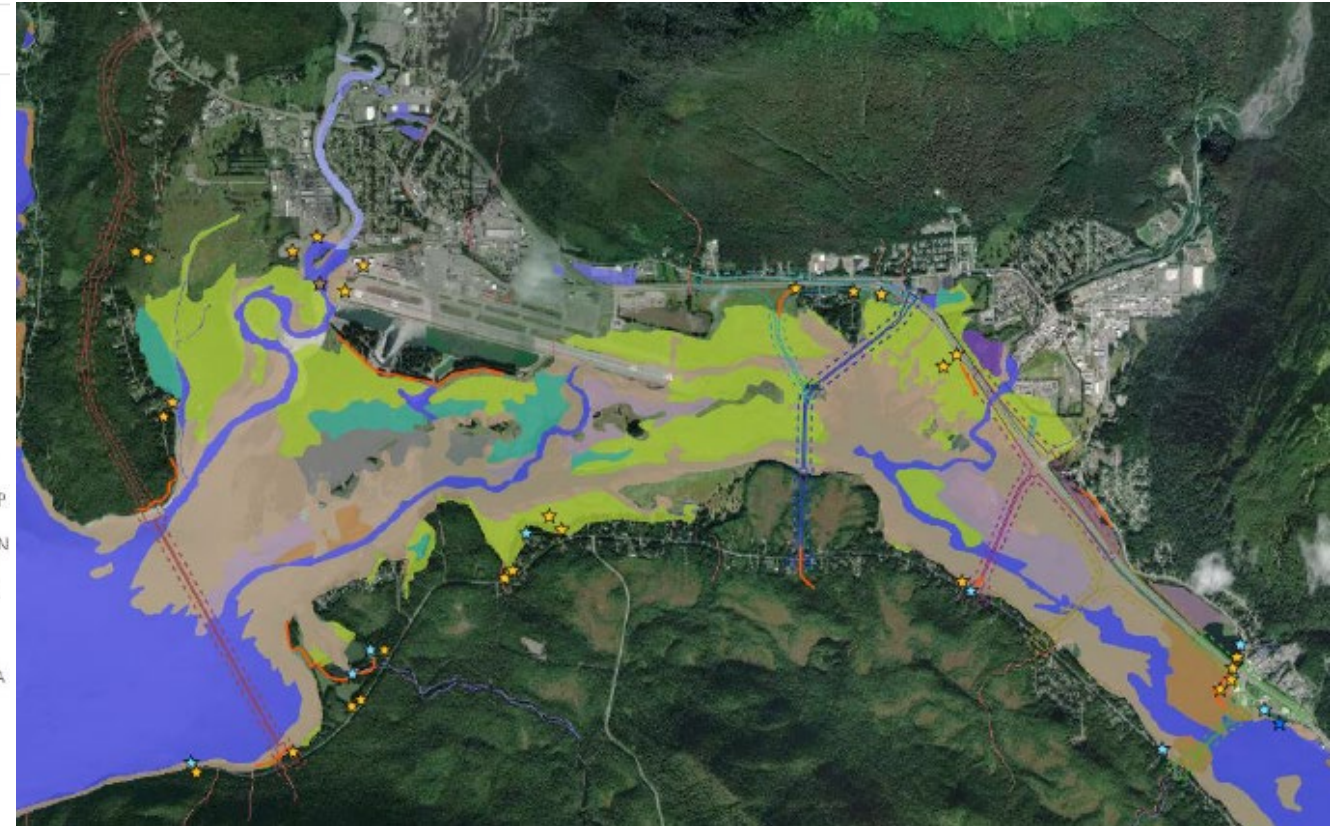
- Habitat surveys in the intertidal zone
- Delineate boundaries of defined habitat types
- Observe and document
 - Relative tide level
 - Submerged aquatic vegetation (SAV) communities
 - Plant species
 - Sediment grain sizes
 - Visible benthic infauna
 - Wildlife use
 - Other habitat features

Legend

Wetlands (NWI)

Estuary

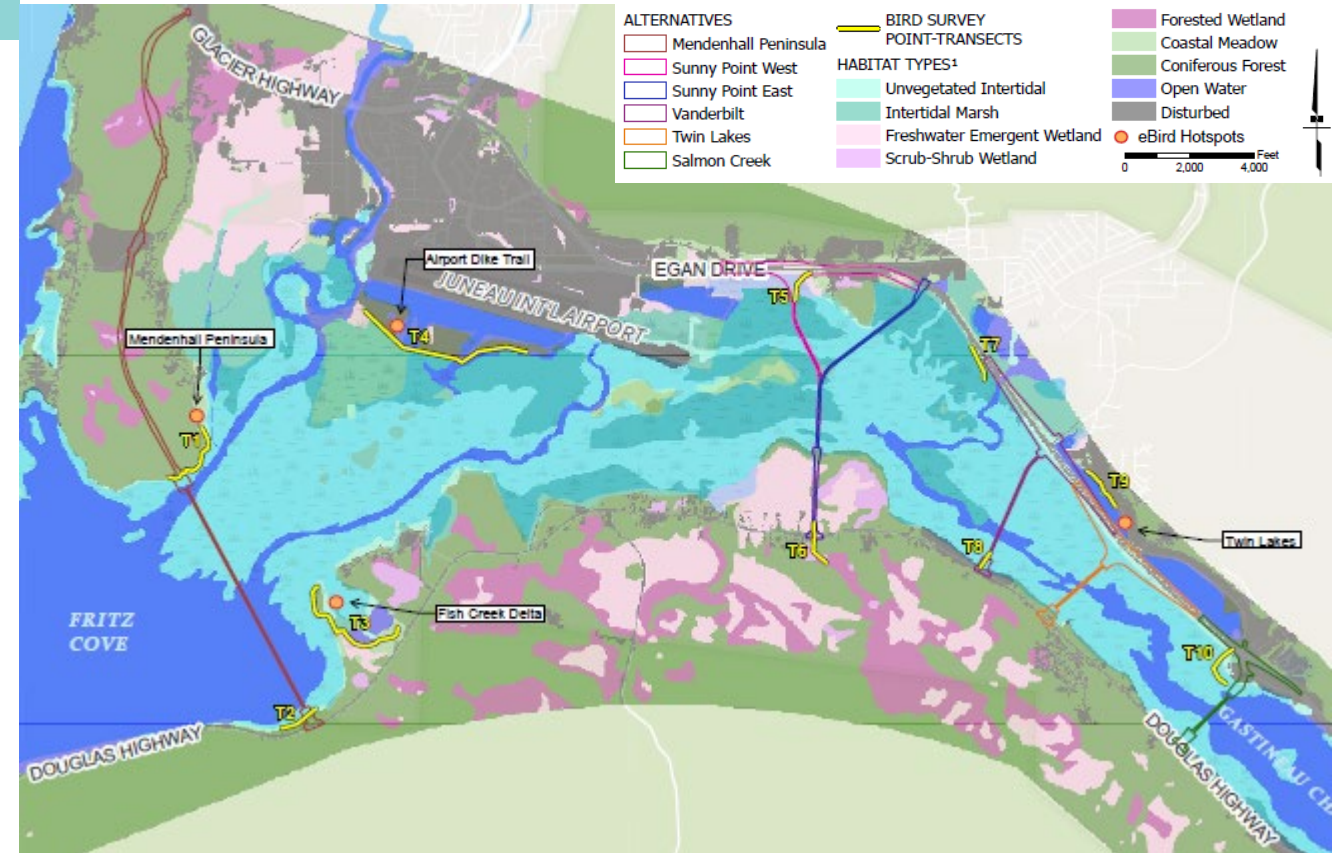
- E1UBL
- E1UBLh
- E2USN
- E2USNh
- E2USP
- E2EM1P
- E2EM1N
- E2EM1/USP
- E2EM1/USN
- E2AB/USN
- E2RSN
- PSS1/EM1A
- R1UBV
- R1USQ
- R2UBH
- R3UBHx
- R5UBH
- R3UBH



MIGRATORY BIRD SURVEY AND UPLAND BIRD HABITAT MAPPING

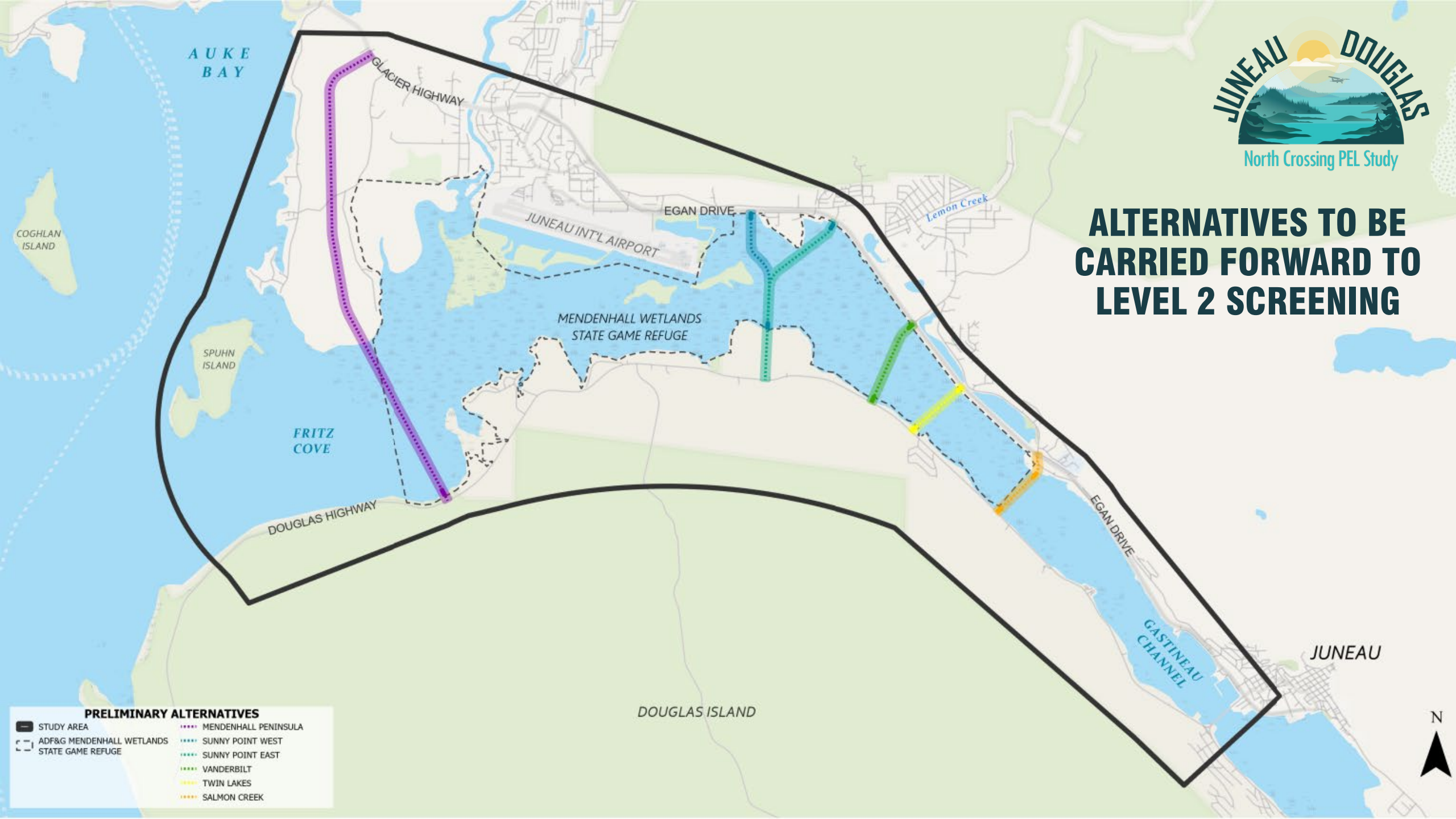
Work Plan: Evaluate the potential impacts of the proposed alternatives on birds and bird habitat

- Document bird species present in the study area during the fall migration period
- Identify differences in bird use of habitat types
- Surveys conducted during the morning and evening
- Collect data to describe the characteristics of each land cover type
 - Plant species
 - Stand structure
 - Habitat quality
 - Land use



WHAT'S NEXT?

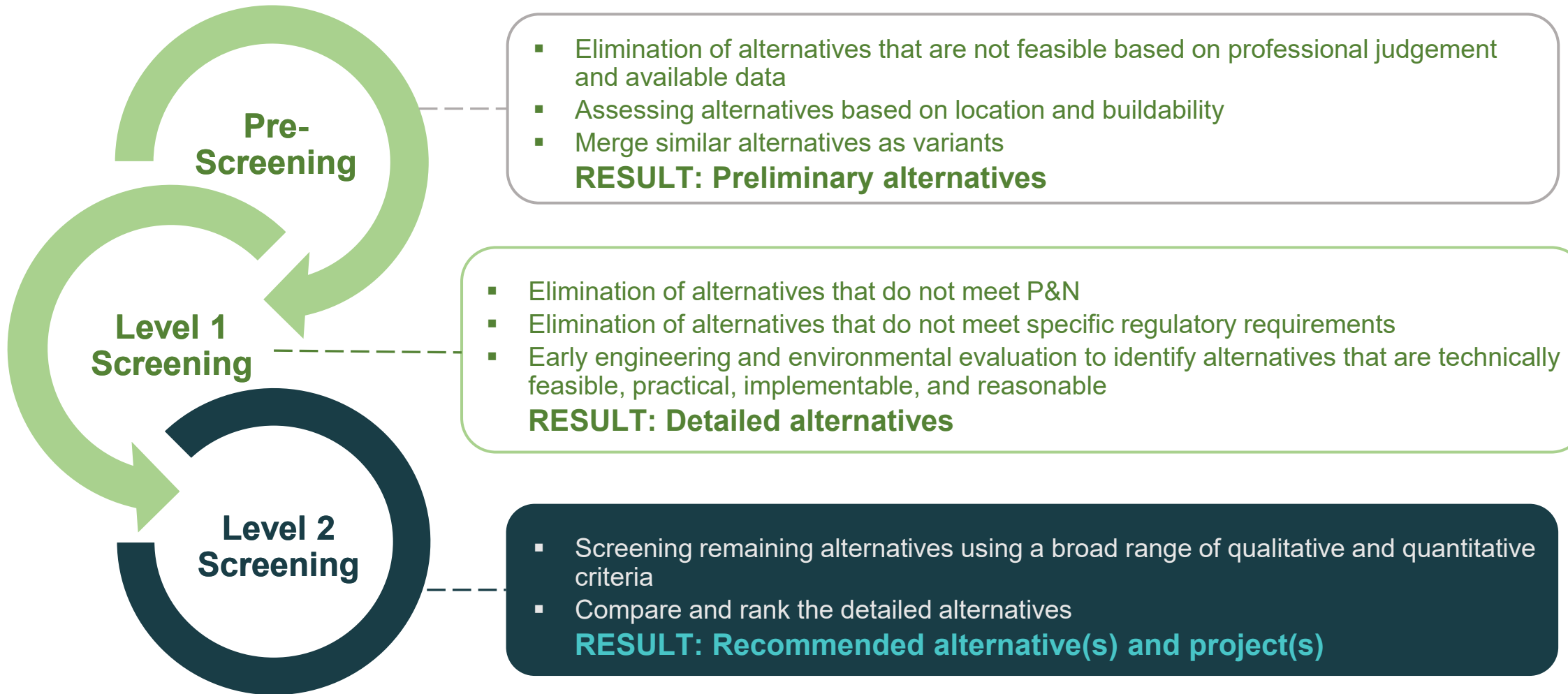
ALTERNATIVES TO BE CARRIED FORWARD TO LEVEL 2 SCREENING



- PRELIMINARY ALTERNATIVES**
- STUDY AREA
 - ADF&G MENDENHALL WETLANDS STATE GAME REFUGE
 - MENDENHALL PENINSULA
 - SUNNY POINT WEST
 - SUNNY POINT EAST
 - VANDERBILT
 - TWIN LAKES
 - SALMON CREEK



ALTERNATIVE SCREENING OVERVIEW – LEVEL 2



LEVEL 2 SCREENING - DETAILS

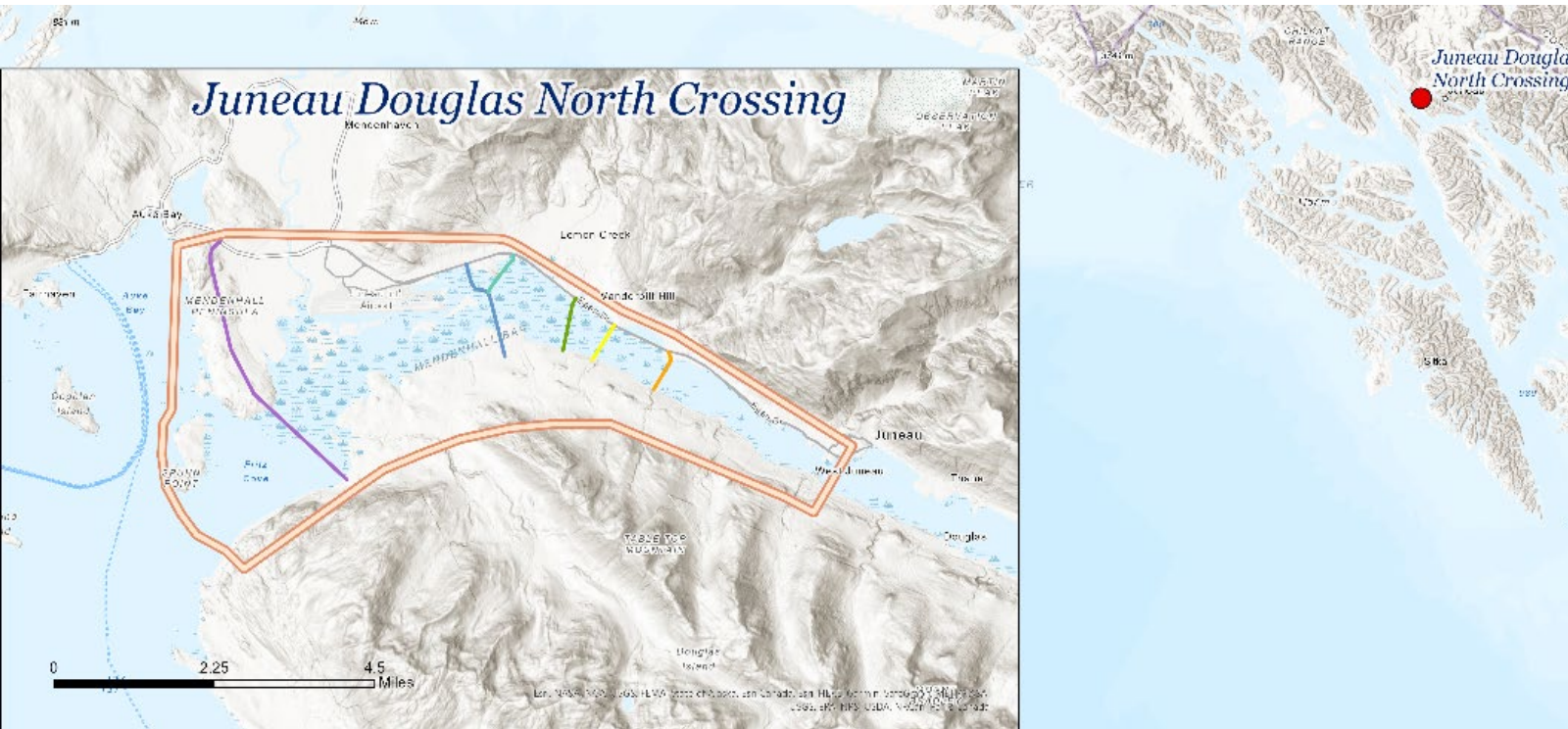
LEVEL 2 SCREENING INCLUDES THE FOLLOWING STEPS:

- 1** Estimate the constraints placed on the alternatives by various resources
 - *Example: acres of residential and commercial land uses*
 - *Additional details gathered from field studies*
- 2** Identify if resources, and to what extent, will be potentially affected by an alternative
 - *Example: acres of wetlands impacted, or streams crossed*
 - *Additional details gathered from the field studies*
- 3** Evaluate the costs of each alternative, logistical considerations, and technical feasibility
 - *Including costs of construction, mitigation, and annual maintenance*
- 4** Determine whether any of the alternatives would have substantially greater costs without having substantially greater benefits

DRAFT 2024-2027 STIP UPDATE



Recent Discretionary Grant Awards



- STIP ID: 34146
- RAISE Grant (\$16.5M)
- Applicant: CBJ
- Partner: DOT&PF
- Amount: Total Programmed \$23.5M
- Project Description: To construct a crossing to connect Juneau with the north end of Douglas Island



Image source: North Crossing PEL Study

WHAT'S NEXT?

Meeting #	Focus	When
1	<ul style="list-style-type: none">▪ Baseline data and existing conditions▪ Purpose and need	Spring 2022
Workshop	<ul style="list-style-type: none">▪ Range of alternatives▪ Alternatives screening process▪ Screening criteria	Summer 2022
3 & 4	<ul style="list-style-type: none">▪ Preliminary alternative screening results▪ Detailed alternative screening criteria▪ Additional field studies	Winter 2022 - Fall 2023
5	<ul style="list-style-type: none">▪ Detailed alternative screening results▪ Recommended alternatives	Winter 2024
	<ul style="list-style-type: none">▪ Draft PEL Study▪ Final Public Open House	Winter/Spring 2024

AFTER THE PEL STUDY WRAPS UP

Funding Allocated

Funding now programmed to advance through Preliminary Engineering and NEPA

PEL Study

Begin Winter 2021

PEL Study

Complete Winter/Spring 2024

Construction

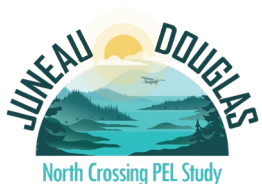
Likely phased over several years

Preliminary Engineering and NEPA

2024-2026 (Approx. 2 Years)

Engineering Design and ROW Acquisition

3 Years or more (TBD)





GROUP DISCUSSION



PROJECT CONTACTS:

Greg Lockwood, DOT&PF Project Manager
(907) 465-2393

Steve Noble, DOWL Project Manager
(907) 562-2000

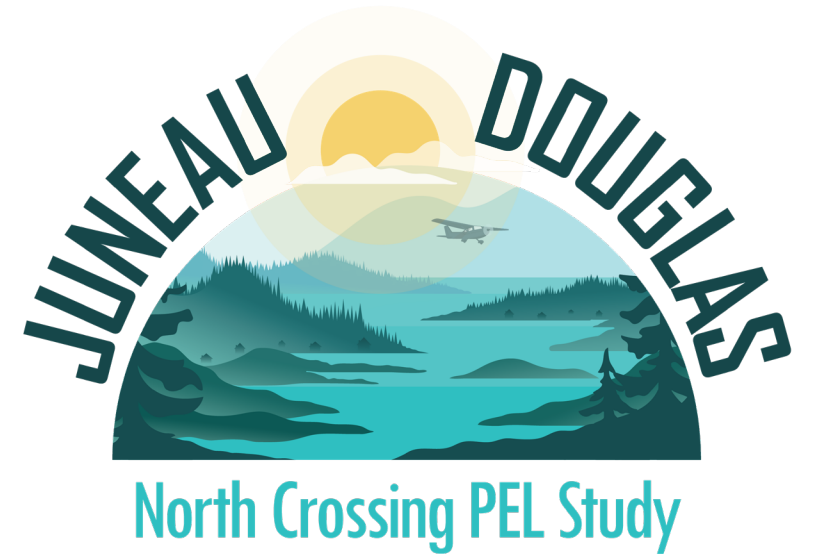
Theresa Dutchuk, DOWL Environmental
(907) 562-2000

Email:

JDNorthCrossing@dowl.com

Website:

www.JDNorthCrossing.com



THANK YOU