

# JOINT TECHNICAL AND STAKEHOLDER ADVISORY COMMITTEES

Meeting No. 6

October 17, 2024

The environmental review, consultation, and other actions required by applicable federal environmental laws for this project are being, or have been, carried out by DOT&PF pursuant to 23 U.S.C. 327 and a Memorandum of Understanding dated April 13, 2023, and executed by FHWA and DOT&PF.

# ZOOM REQUESTS AND FUNCTIONS

## TECHNICAL AND STAKEHOLDER ADVISORY COMMITTEE MEETING



Please keep your microphone muted. Phone users press \*6 to mute or unmute your line.



Use “Chat” to view the chat window or send a message.



Select “Raise Hand” under “Reactions” to indicate you have a question/comment. Phone users press \*9 to raise hand.



Make sure you are identified by name and organizational affiliation. Open the “Participants” window, hover your mouse over your name, select the ellipse (...), then “Rename,” and “Change.”



If your connection cuts out, this is the phone number you need to dial back into the meeting: (253) 215-8782, Meeting ID: 820 3301 3027, Passcode: 209049.

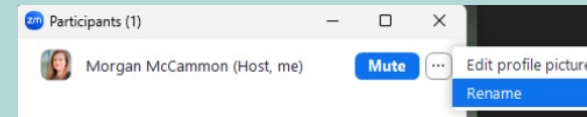


Use the “Show Captions” function to view closed captioning.

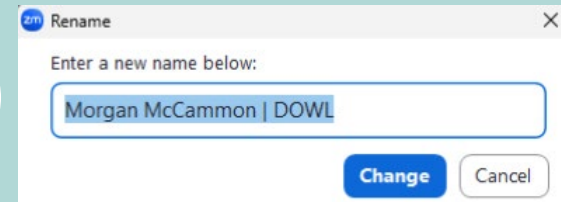
1



2



3

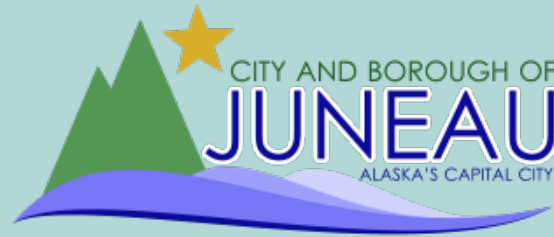


# AGENDA

- Welcome and Introductions
- Schedule Update
- Level 2 Screening - Update
- New Information
- Discussion
- Wrap-up & Next Steps



# PROJECT TEAM



**Greg Lockwood**  
Project Manager

**Jill Melcher**  
Project Planner

**Christy Gentemann**  
Environmental Analyst

**Katie Koester**  
City Manager

**Denise Koch**  
Director of Engineering & Public Works

**Bridget LaPenter**  
Project Manager

**Steve Noble, PE**  
Project Manager

**Renee Whitesell, PTP**  
PEL Study Lead

**Theresa Dutchuk**  
Environmental

# SCHEDULE

SPRING 2022

SUMMER - FALL 2022

WINTER 2022 - SPRING 2023

SUMMER 2023 - FALL 2024

WINTER 2024 - SPRING 2025



Project Initiation,  
Problems to be Solved,  
Purpose & Need:  
Emerging Themes



Evaluation Criteria,  
Develop & Screen  
Alternatives



Evaluate & Refine  
Alternatives,  
Level 1 Screening



Limited Environmental  
Fieldwork, Additional  
Analysis & Level 2  
Screening



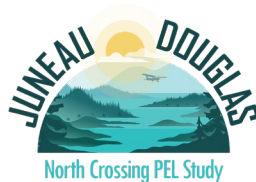
Finalize Documentation,  
Public Comment Period &  
Finalize PEL Study



Advisory Committees Meeting



Public Meeting



# SCREENING PROCESS

# ALTERNATIVES SCREENING PROCESS

**Level 1 screening evaluated how well each alternative:**

- Satisfies the proposed projects purpose:
  - Improve connection between Douglas Island and Juneau
  - Improve transportation for non-motorized users
  - Reduce transportation related energy consumption
- Meets the transportation needs:
  - Alternate access and transportation infrastructure resiliency
  - Decrease traffic pressure on Douglas Island Bridge and its intersections
- Satisfies identified additional goals



**Alternative screening process was designed to incorporate new information discovered throughout the process**

# LEVEL 2 SCREENING - DETAILS

**Level 2 Screening quantitatively evaluated how well each alternative:**

- Satisfies the proposed projects purpose and meets the transportation needs
- Satisfies adopted planning documents
- Is technically implementable and constructable from an engineering perspective
- Is financially feasible
- Is reasonable under the National Environmental Policy Act (NEPA)
- Is practicable under the Clean Water Act
- Is prudent and feasible under Section 4(f) of the Department of Transportation Act of 1966





# SCORING TIMELINE

- Alternatives Screening process presented to Advisory Committees *November 17, 2022*
- Comments received through February 2, 2023
- Level 1 Screening presented to Advisory Committees *March 6, 2023*
- 14 Day review Period
- Revised Level 1 Screening *April 27, 2023*
- Decision to collect additional data during PEL phase *August 2023*
- Data collection *Fall 2023*
- Draft Level 2 Screening Results shared with Advisory Committees *March 1, 2024*
- 42 Day review period
- Revised Level 2 screening in progress *Ongoing*
- Draft Revised Level 2 Screening to Advisory Committees *TBD*

# REVISED LEVEL 2 SCREENING

# UPDATES PROPOSED BASED ON FEEDBACK

- Weighted scoring for impacts within Mendenhall Wetland State Game Refuge (MWSGR)
- Important migratory bird habitat updated to only include acreage of impact within the MWSGR
- Acreages of direct impact updated to include bridge deck
- Functional assessment used to evaluate impacts to high value wetlands
- Stream and riparian impacts adjusted from acreage to linear feet calculations
- Included Hendrickson Point as a potential 4(f) resource
- Added Hendrickson Point to the category of “protected lands”
- Removed overlapping counts between residential uses directly affected and within 100ft of residential property. Same for commercial.



# PROPOSED REVISED SCORING

	No Build	Mendenhall Peninsula	Sunny Point West	Sunny Point East	Vanderbilt	Twin Lakes	Salmon Creek
Original	-18	-15	-6	-2	-6	-2	-11
Revised	-16	-12	-23	-20	-17	-11	<i>pending</i>

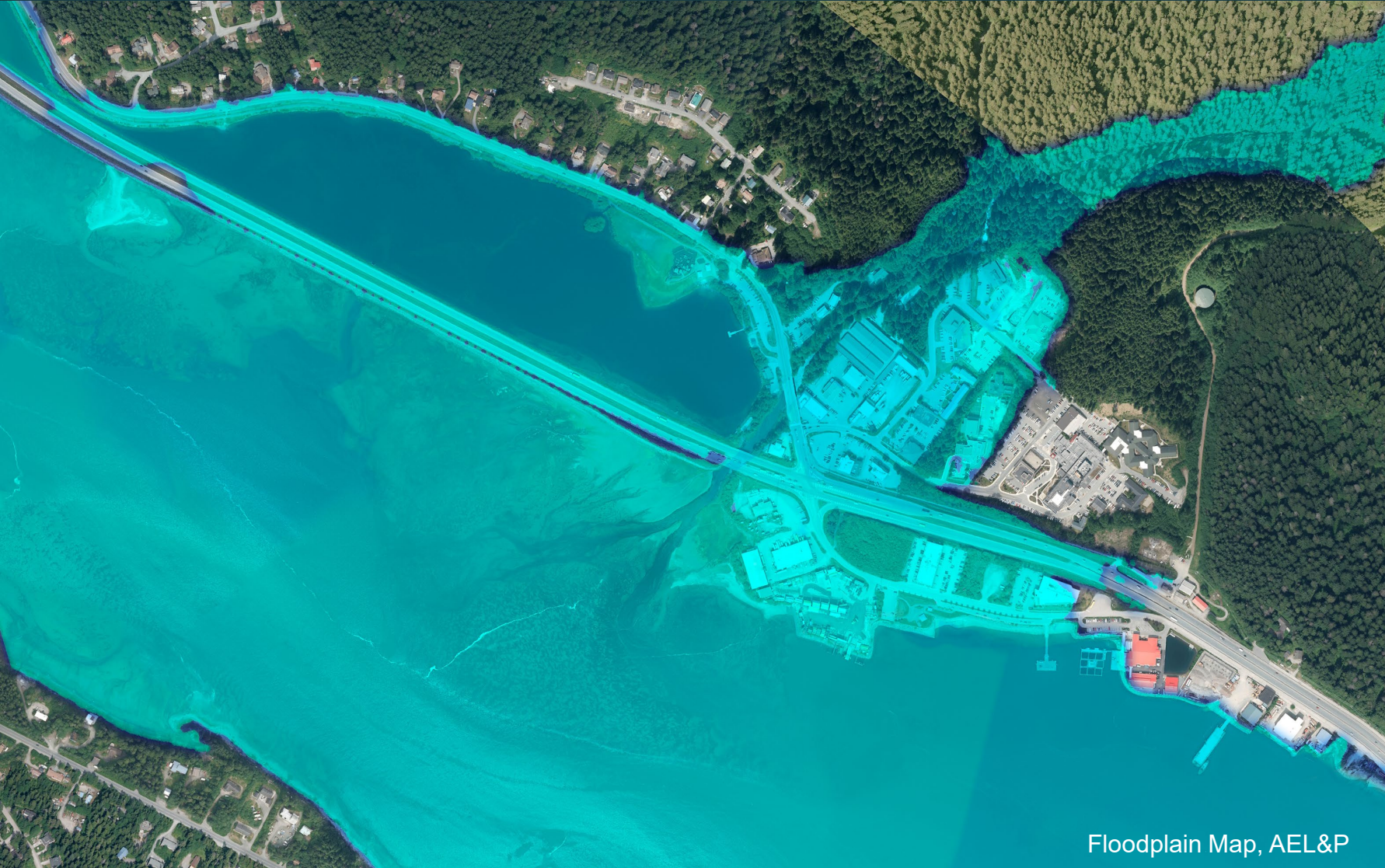
**NEW INFORMATION**

# ALASKA ELECTRIC LIGHT & POWER SALMON CREEK DAM



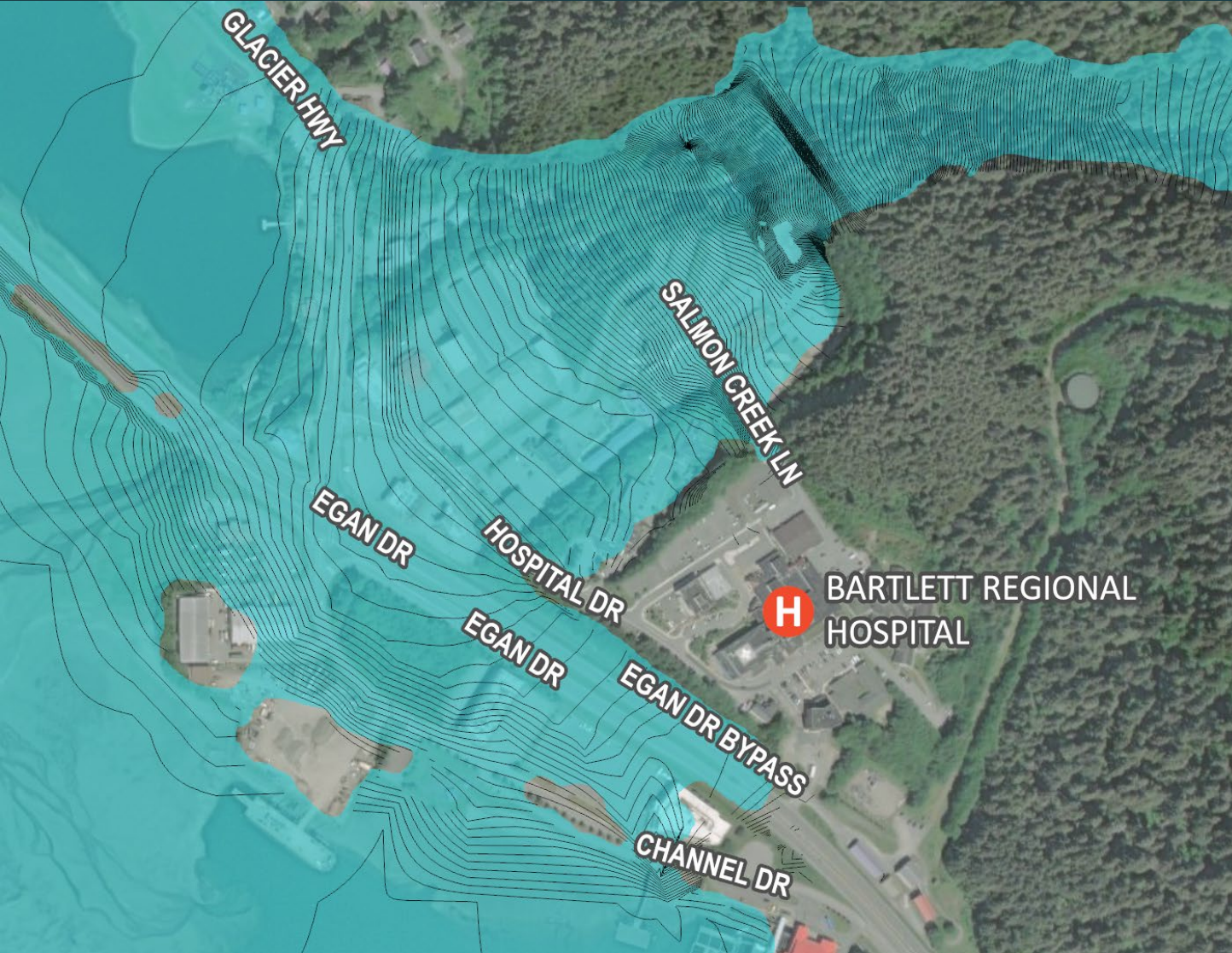
- April 2024: AEL&P shared information with DOT&PF concerning the Salmon Creek Dam
- Federal Energy Regulatory Commission (FERC) requirements:
  - Annual inspections
  - Dam Safety Surveillance and Monitoring Plan
  - Thorough independent inspections every five years
- AEL&P monitors reservoir level, with alarm system if normal parameters are exceeded

# ALASKA ELECTRIC LIGHT & POWER SALMON CREEK DAM



- Floodplain map representing the high-water line under “sunny day” conditions

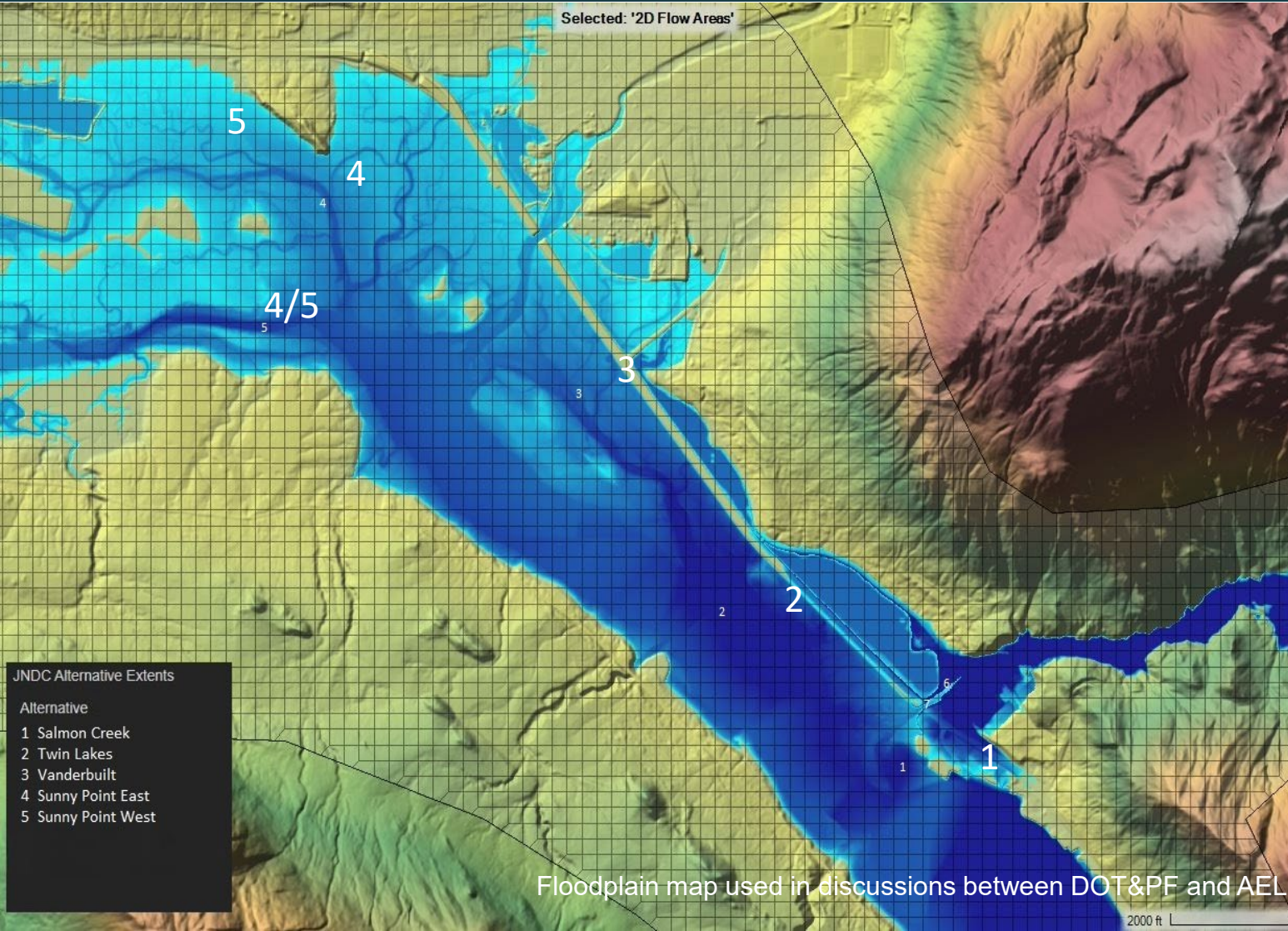
# ALASKA ELECTRIC LIGHT & POWER SALMON CREEK DAM



- Floodplain map representing the high-water line under “sunny day” conditions
- Two-foot contours

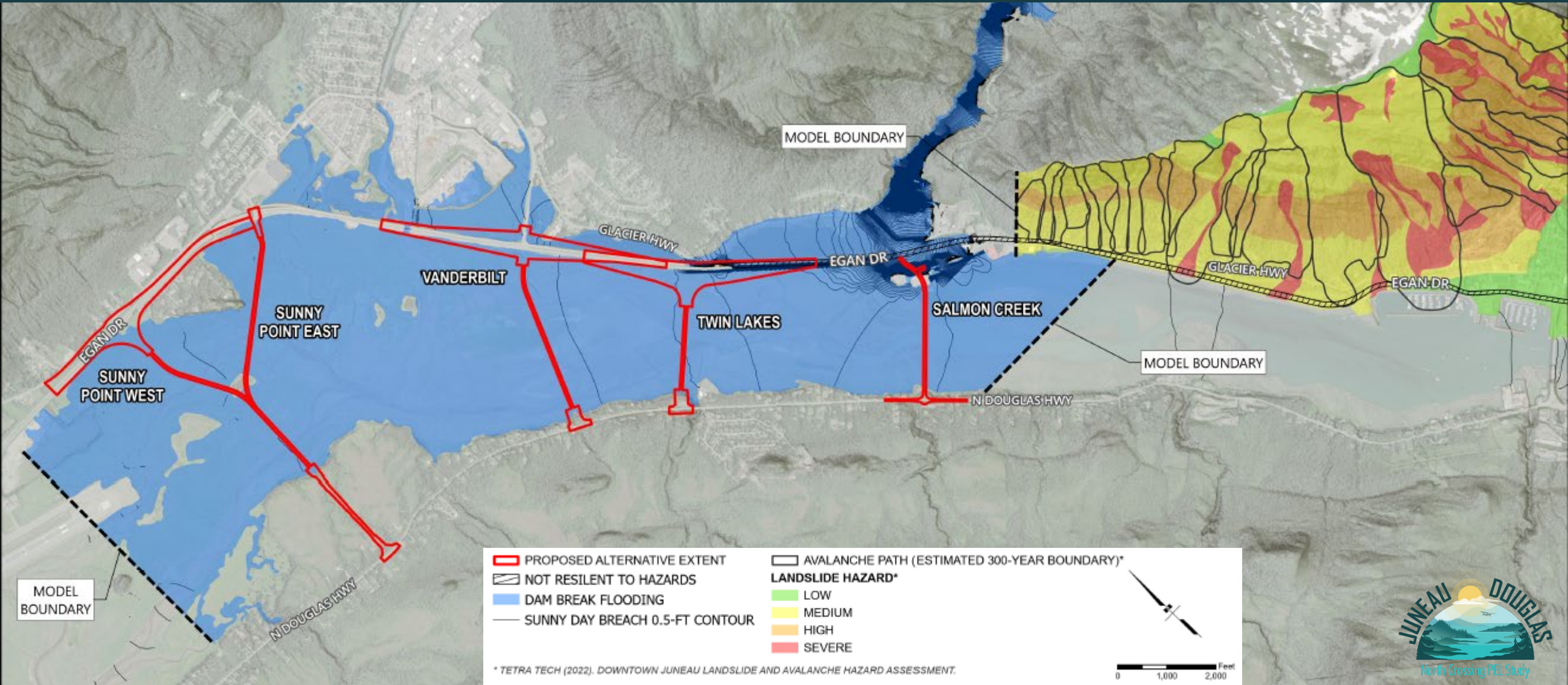


# ALASKA ELECTRIC LIGHT & POWER SALMON CREEK DAM



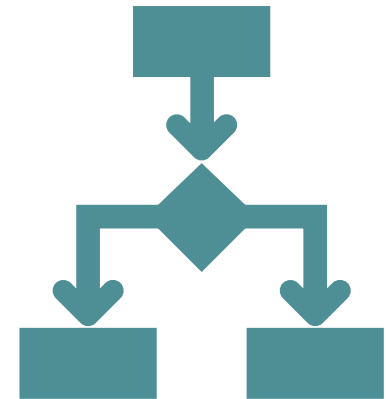
Crossing Location	Maximum Depth above existing (ft)	Maximum Velocity (ft/sec)
1. Salmon Creek	12.99	<b>11.80</b> (8.0 mph)
2. Twin Lakes	16.05	<b>10.73</b> (7.3 mph)
3. Vanderbilt	8.46	<b>6.23</b> (4.2 mph)
4. Sunny Point East	7.36	<b>1.57</b> (1.1 mph)
5. Sunny Point West	9.08	<b>5.13</b> (3.5 mph)

# AVALANCHE PATH – LANDSLIDE HAZZARD



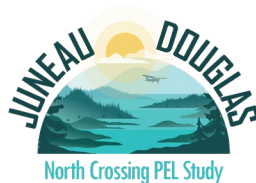
# PROGRESS ON THE SCREENING FOR SALMON CREEK

- Paused pending additional information on the risk analysis.
- Freedom of Information Act (FOIA) has been submitted to FERC on August 30 and October 10, 2024, to obtain more information.
- Continuing to consult with Statewide Environmental Office on the path forward.
- Eventually, the team will need to decide if sufficient information exists to be able to make a determination on the Salmon Creek Alternative or, if additional information is needed:
  - Will additional studies be completed during the PEL Study?
  - Will we include Salmon Creek in the alternatives moving forward to NEPA and conduct the additional studies at that time?



# WHAT'S NEXT?

Advisory Committee Meetings	Focus	When
1	<ul style="list-style-type: none"> <li>▪ Baseline data and existing conditions</li> <li>▪ Purpose and need</li> </ul>	Spring 2022
Workshop	<ul style="list-style-type: none"> <li>▪ Range of alternatives</li> <li>▪ Alternatives screening process</li> <li>▪ Screening criteria</li> </ul>	Summer 2022
3 & 4	<ul style="list-style-type: none"> <li>▪ Preliminary alternative screening results</li> <li>▪ Detailed alternative screening criteria</li> <li>▪ Additional field studies</li> </ul>	Winter 2022 - Winter 2024
5 & 6	<ul style="list-style-type: none"> <li>▪ Detailed alternative screening results</li> <li>▪ Recommended alternatives</li> </ul>	Winter - Fall 2024
7	<ul style="list-style-type: none"> <li>▪ Final Level 2 Screening Results</li> </ul>	Tentatively December 2024
[Public Meeting]	<ul style="list-style-type: none"> <li>▪ Draft PEL Study</li> <li>▪ Final Public Open House</li> </ul>	Tentatively January 2025





# **GROUP DISCUSSION**



# PROJECT CONTACTS:

**Greg Lockwood, DOT&PF Project Manager**  
(907) 465-2393

**Bridget LaPenter, CBJ Project Manager**  
(907) 586-0800 ext. 4187

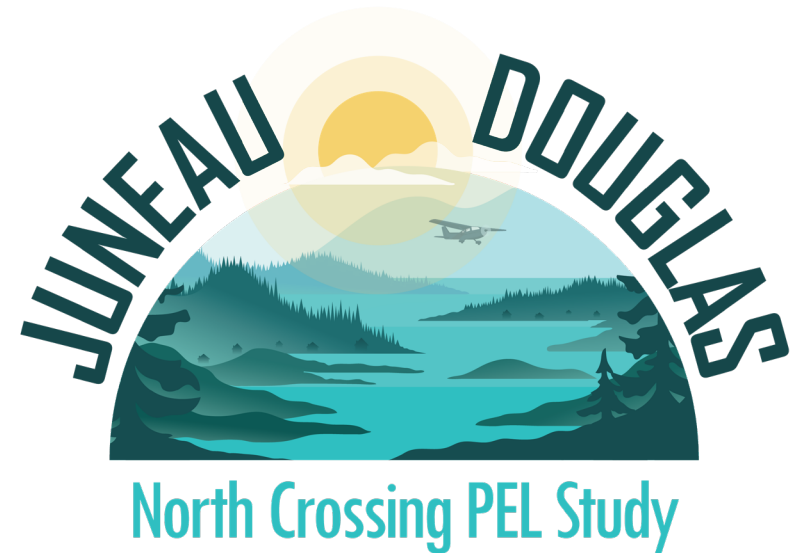
**Steve Noble, DOWL Project Manager**  
(907) 562-2000

**Email:**

[JDNorthCrossing@dowl.com](mailto:JDNorthCrossing@dowl.com)

**Website:**

[www.JDNorthCrossing.com](http://www.JDNorthCrossing.com)



# THANK YOU

