

BONNIE BRAE NEIGHBORHOOD ASSOCIATION MEETING

October 26, 2022

PRELIMINARY SCHEDULE

SPRING 2022



Project Initiation, Problems to be Solved, Purpose & Need: Emerging Themes

Baseline Analysis, Data Collection, Purpose & Need: Emerging Themes

SUMMER / FALL 2022



Evaluation Criteria, Develop & Screen Alternatives

Identify Crossing Alternatives and Develop Screening Criteria

WINTER 2022 / 2023



Evaluate, Refine, & Select Alternatives

Preferred Alternatives, Screening, Draft PEL Study

SPRING 2023



Finalize Documentation

Public Comment Period (30 days) and Finalize PEL Study



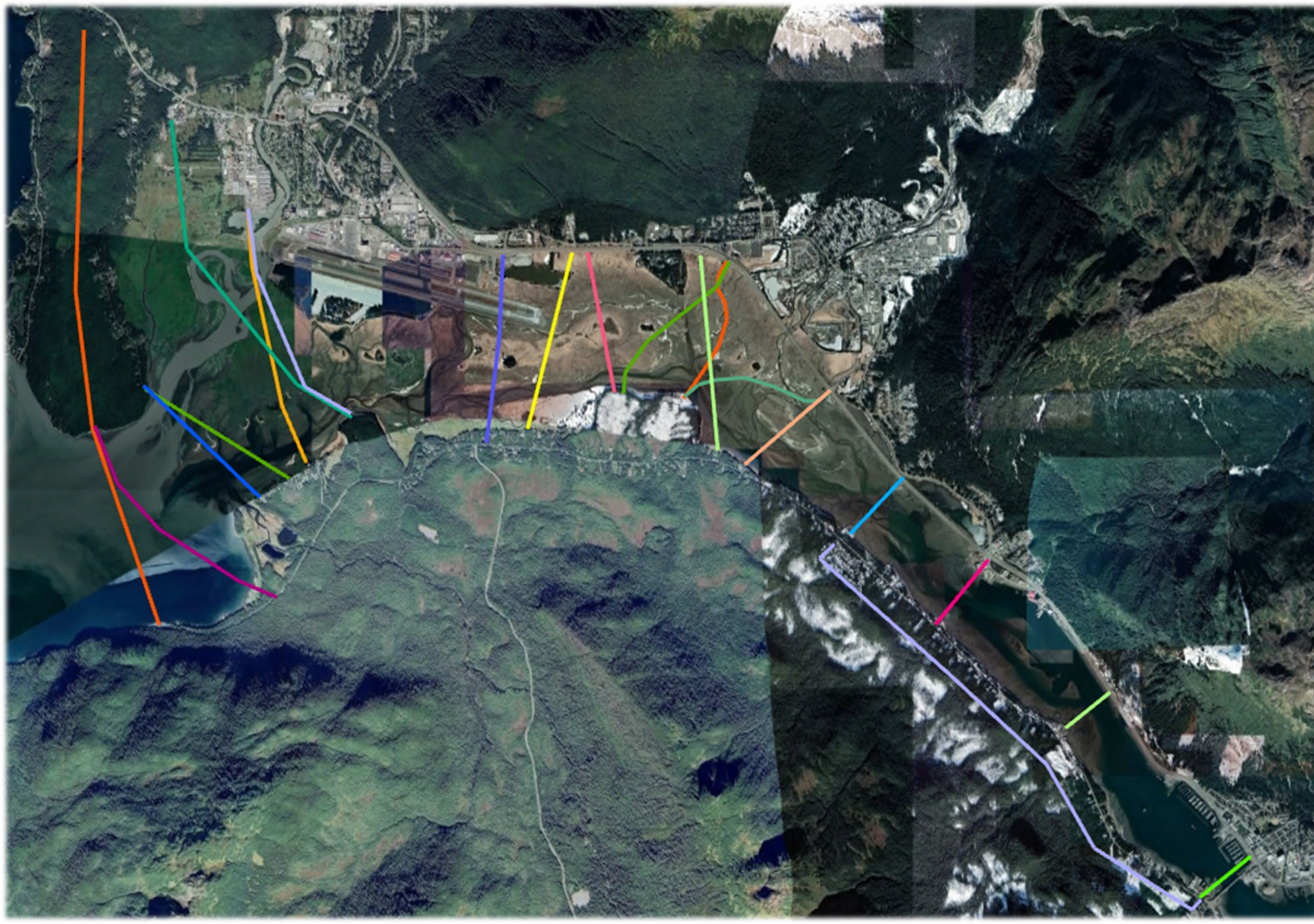
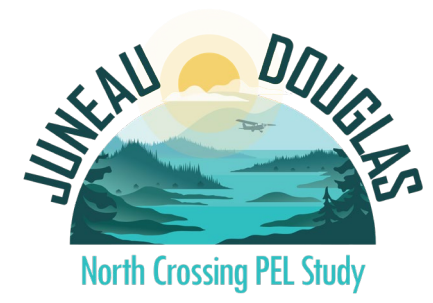
CURRENT STATUS & WHAT'S NEXT?

Meeting #	Focus	When
1	<ul style="list-style-type: none">▪ Open House No. 1▪ Baseline data and existing conditions▪ Purpose and need	May 2022
Workshop	<ul style="list-style-type: none">▪ Range of alternatives▪ Alternatives screening process▪ Screening criteria	July 2022
3	<ul style="list-style-type: none">▪ Listening Sessions – September 17, 2022▪ Preliminary alternative screening results▪ Detailed alternative screening criteria▪ Open House No. 2 – December 12, 2022	Fall/Winter 2022
4	<ul style="list-style-type: none">▪ Open House No. 3▪ Detailed alternative screening results▪ Recommended alternatives	Winter/Spring 2023

PLANNING & ENVIRONMENTAL LINKAGES BENEFITS

The benefits of stronger linkages between the transportation planning and project development processes can include:

- ✔ Stronger agency and public relationships
- ✔ Improved project delivery timeframes
- ✔ Earlier identification of key environmental resources
- ✔ Better funding and project development information
- ✔ Build projects with better outcomes
- ✔ Flexible approach for development of transportation improvement strategies



**IDEAS FOR
CROSSING
LOCATIONS
WE HAVE
HEARD
SO FAR**



WE WANT YOUR FEEDBACK!

You are invited to the **Public Open House No. 2**

Join us to:

- Learn more about the PEL study and progress to date
- Provide feedback on the preliminary crossing locations and initial screening criteria
- Share your thoughts and concerns with the project team

Date: Monday, December 12, 2022

Time: 4:00 – 6:00 p.m.

Location: Juneau Arts and Culture Center (JACC)
350 Whittier Street, Juneau, AK

Other ways to provide input:

Email the study team at JDNorthCrossing@dowl.com

For more information, visit the PEL study website
www.JDNorthCrossing.com



PROJECT CONTACTS:

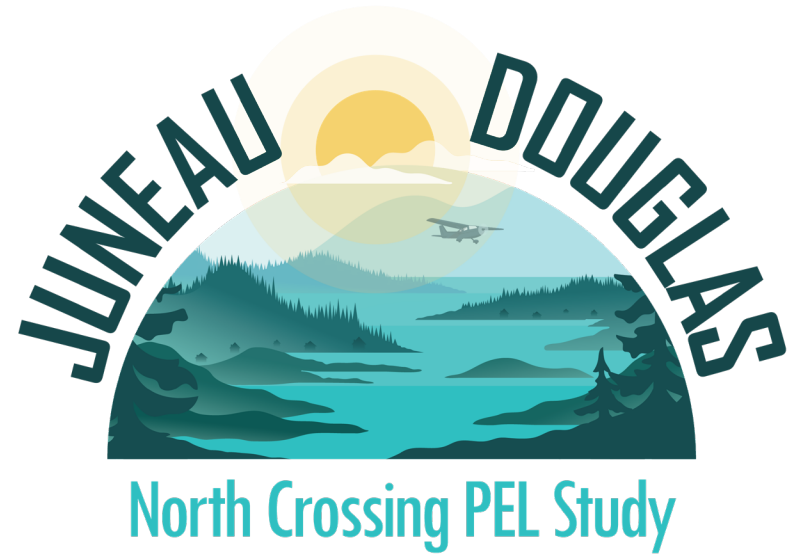
Marie Heidemann, DOT&PF Project Manager
(907) 465-4477

Steve Noble, DOWL Project Manager
(907) 562-2000

Nina Keller, DOWL Assistant Project Manager
(907) 562-2000

Email: JDNorthCrossing@dowl.com

Website: www.JDNorthCrossing.com



THANK YOU