

# PROJECT CONTACTS:

Marie Heidemann, DOT&PF Project Manager  
(907) 465-4477

Irene Gallion, CBJ Liaison  
(907) 586-0753

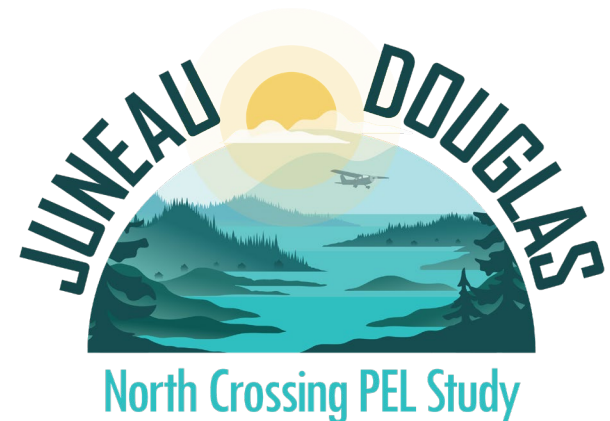
Nina Keller, DOWL Assistant Project Manager  
(907) 562-2000

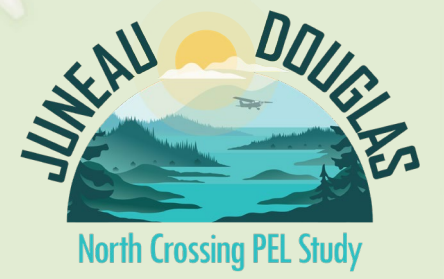
Email: [JDNorthCrossing@dowl.com](mailto:JDNorthCrossing@dowl.com)

Website: [www.JDNorthCrossing.com](http://www.JDNorthCrossing.com)

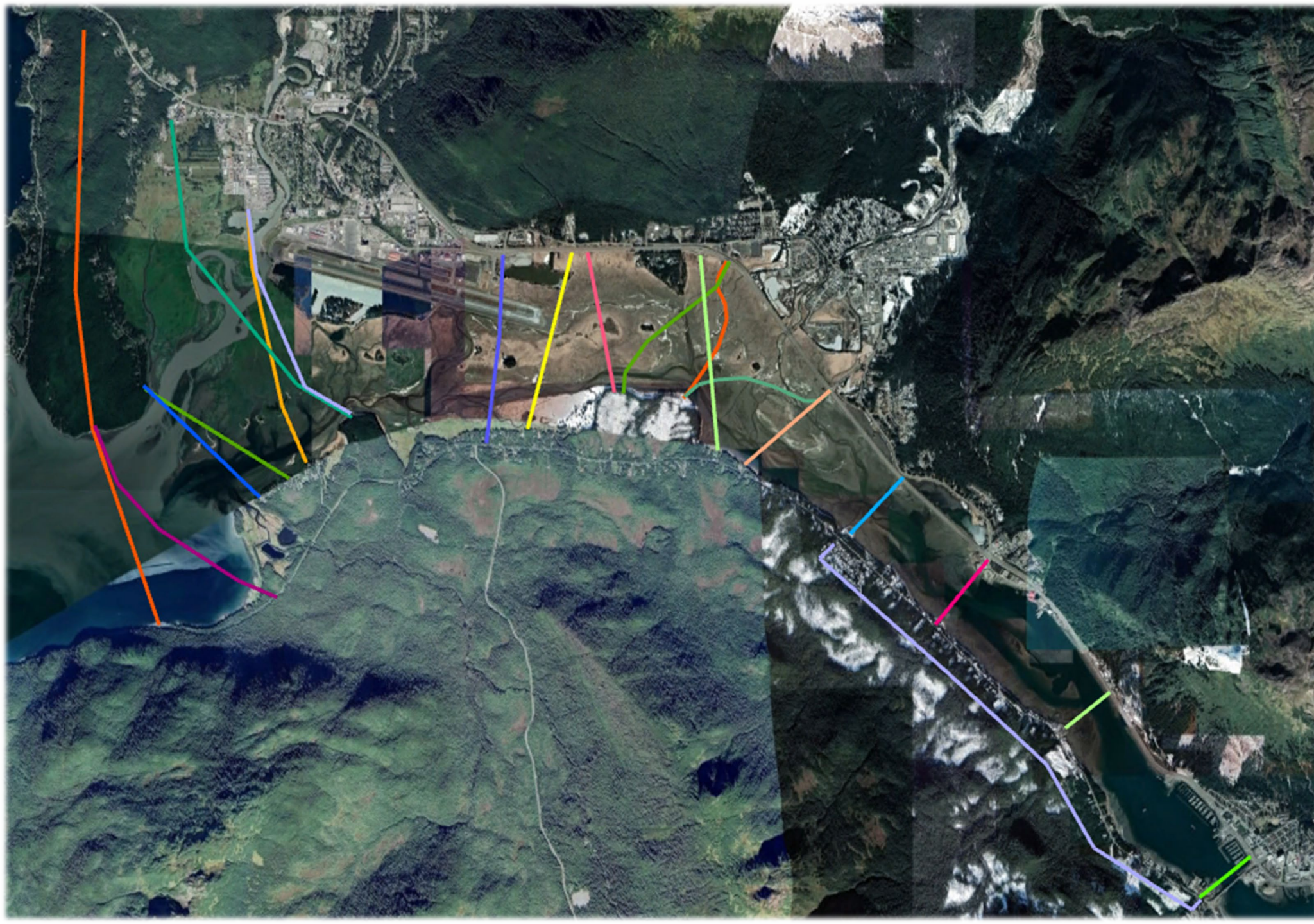
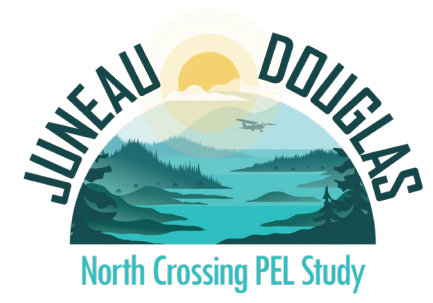


Scan with your smart phone  
to visit the website!





**STUDY AREA**



**IDEAS FOR  
CROSSING  
LOCATIONS  
WE HAVE  
HEARD  
SO FAR**