

NORTH DOUGLAS NEIGHBORHOOD ASSOCIATION MEETING

September 27, 2022

PRELIMINARY SCHEDULE

SPRING 2022



Project Initiation, Problems to be Solved, Purpose & Need: Emerging Themes

Baseline Analysis, Data Collection, Purpose & Need: Emerging Themes

SUMMER / FALL 2022



Evaluation Criteria, Develop & Screen Alternatives

Identify Crossing Alternatives and Develop Screening Criteria

WINTER 2022 / 2023



Evaluate, Refine, & Select Alternatives

Preferred Alternatives, Screening, Draft PEL Study

SPRING 2023



Finalize Documentation

Public Comment Period (30 days) and Finalize PEL Study



CURRENT STATUS & WHAT'S NEXT?

Meeting #	Focus	When
1	<ul style="list-style-type: none">▪ Open House No. 1▪ Baseline data and existing conditions▪ Purpose and need	May 2022
Workshop	<ul style="list-style-type: none">▪ Range of alternatives▪ Alternatives screening process▪ Screening criteria	July 2022
3	<ul style="list-style-type: none">▪ Listening Sessions – September 17, 2022▪ Preliminary alternative screening results▪ Detailed alternative screening criteria▪ Open House No. 2 – mid-December 2022	Fall/Winter 2022
4	<ul style="list-style-type: none">▪ Open House No. 3▪ Detailed alternative screening results▪ Recommended alternatives	Winter/Spring 2023

PLANNING & ENVIRONMENTAL LINKAGES BENEFITS

The benefits of stronger linkages between the transportation planning and project development processes can include:

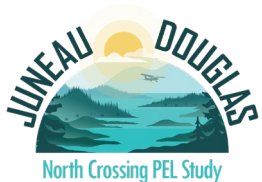
- ✔ Stronger agency and public relationships
- ✔ Improved project delivery timeframes
- ✔ Earlier identification of key environmental resources
- ✔ Better funding and project development information
- ✔ Build projects with better outcomes
- ✔ Flexible approach for development of transportation improvement strategies

DRAFT PURPOSE AND NEED

The **purpose** of the Juneau Douglas North Crossing PEL Study is to identify ways to improve the connection to Douglas Island from Juneau by identifying a north crossing corridor that will provide a second access, reduce existing and future traffic congestion on the existing Douglas Bridge and its intersections, and increase mobility. The study will also seek to identify ways to improve transportation for non-motorized users, respond to community values, and support or enhance economic, social, environmental, and energy conditions.

Through a collaborative process that balances multiple viewpoints of stakeholders, agencies, and the public, and working within regulatory requirements, DOT&PF and CBJ determined that a successful solution should address the following **needs**:

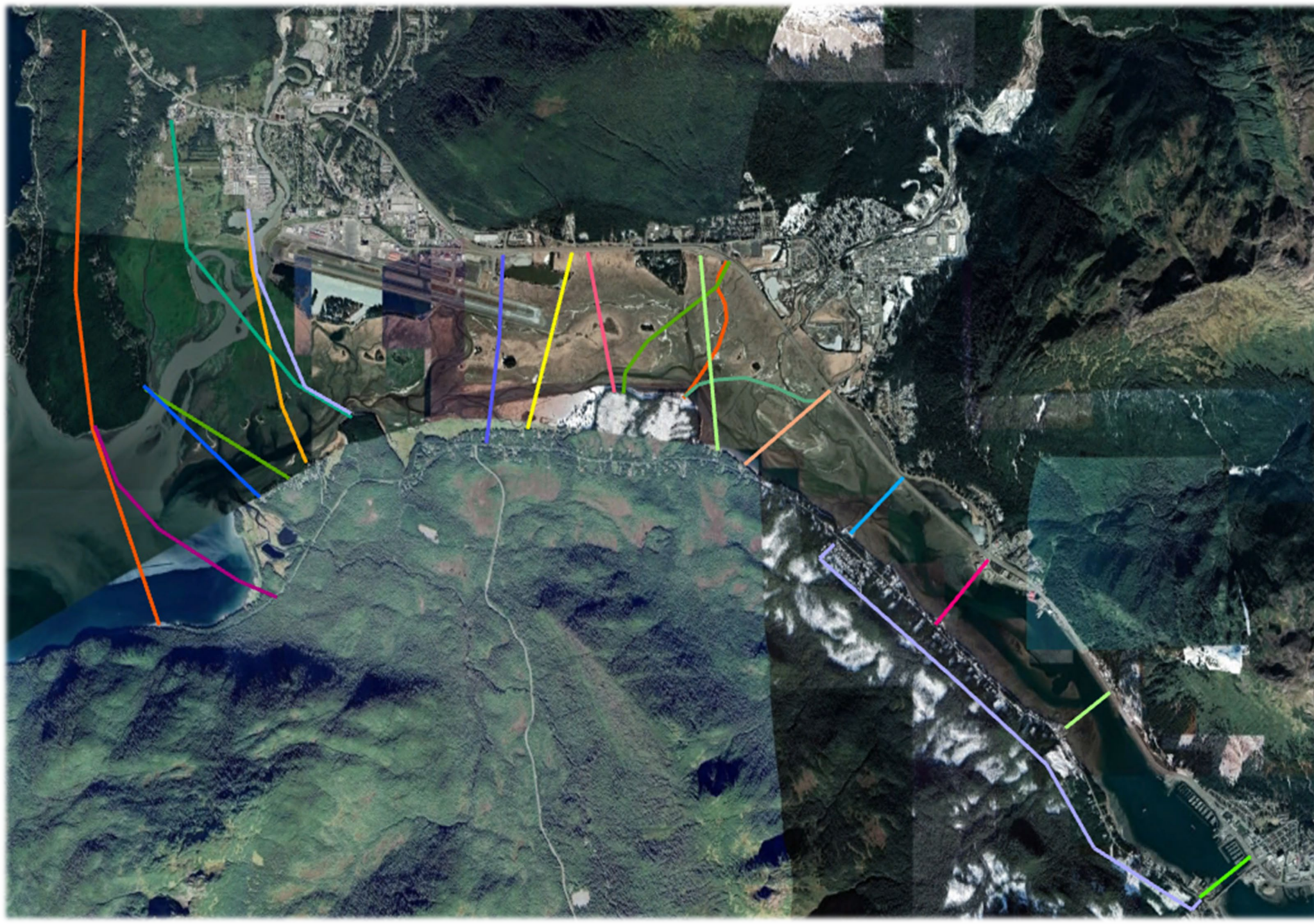
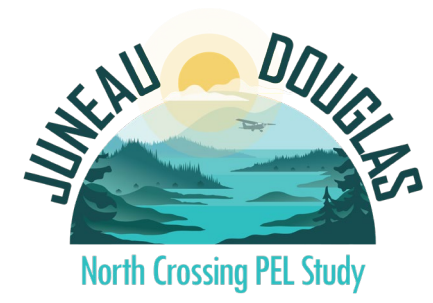
- Redundant access and transportation infrastructure resiliency (i.e., provide a second connection between Juneau and Douglas Island, particularly in the event the Douglas Island Bridge or another single route travel corridor in the area (North Douglas Highway or Egan Drive) is inaccessible or out of service)
- Decrease traffic pressure on Douglas Island Bridge and its intersections



DRAFT PURPOSE AND NEED

The identified alternative(s) should also meet these **additional goals**:

- Improve connection to North and West Douglas Island by creating additional traffic capacity to support the future development of affordable housing and economic development opportunities
- Avoid, minimize, and mitigate impacts to the environment
- Maintain the visual, cultural, and scenic identity of Juneau and Douglas Island
- Enhance and protect public health and safety and safety of travelers and the communities that transportation facilities traverse and serve



**IDEAS FOR
CROSSING
LOCATIONS
WE HAVE
HEARD
SO FAR**

PROJECT CONTACTS:

Marie Heidemann, DOT&PF Project Manager
(907) 465-4477

Steve Noble, DOWL Project Manager
(907) 562-2000

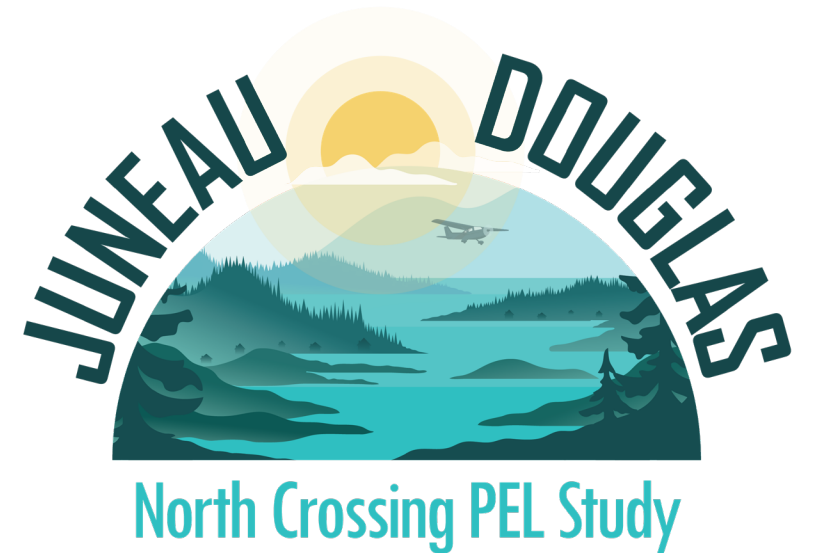
Nina Keller, DOWL Assistant Project Manager
(907) 562-2000

Email:

JDNorthCrossing@dowl.com

Website:

www.JDNorthCrossing.com



THANK YOU